

**COLD STOP® CURTAINS**  
**Australian Freezer Room Trial Results**

## MAIN FREEZER ROOM Pre installation

- Room Size: 7100 mm long X 4600mm wide X 3000mm high.
- Door Size: 1500mm wide by 2000mm high
- Fitted with 2 Kirby Evaporators. PVC strip curtains installed on this unit and the room was badly iced up (walls, roof, evaporators and floor) creating a dangerous operating environment. PVC Curtains brittle and frozen.
- Minutes door open per day prior during this period 291 minutes.



Pre Installation Cool Room Door – Internal View

## MAIN FREEZER ROOM Pre installation – Room Condition Photos



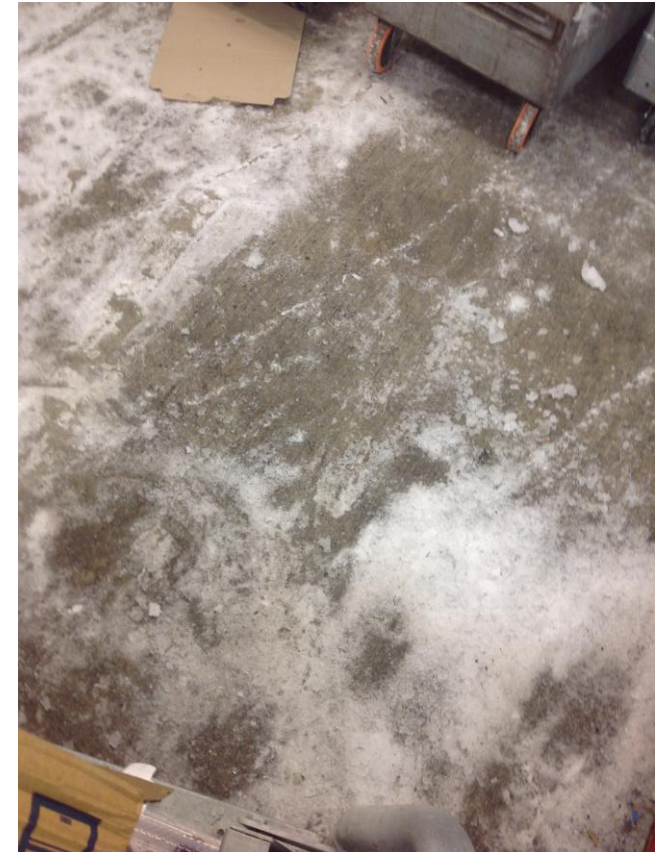
Pre Installation LT Room – Ice build up on Evaporators / fan motor blown



Pre Installation LT Room – Ice build up on Walls



Pre Installation LT Room – Ice build up on Roof



Pre Installation LT Room – Ice build up on Floor near entry

## MAIN FREEZER ROOM Post Installation

- Installation time was just over 1.5 hours (including removal of existing PVC curtain).
- Minutes door open per day during the review period was 285 minutes and shows no significant change from prior to installation.



Post Installation Cool Room Door – Internal View

## MAIN FREEZER ROOM

### Post Implementation Room Conditions

- Store visit was made three months after installation to review freezer room conditions and the following was noted:
  - No ice build up on the floor / especially at entry door
  - No ice build up on the evaporator
  - Some droplet of water on roof following defrost as a result of no defrost termination – subsequently implemented
- From review of photos clear that safety for staff within the Freezer room has greatly improved via the reduced warm air and moisture infiltration into the freezer room.



Post Installation LT Room – No Ice build up on Floor – significantly reducing slip hazards



Post Installation LT Room – No ice build up on entry door



Post Installation LT Room – No Ice build up either Evaporator



Post Installation LT Room – No Ice build up on Roof or Walls